

ilzoeasy

ilzoeasy-Installation Recommendations
module clamps are out-dated



Tools and Preparation



Cordless drill



Crimping tool



Rail bundle - shipping pack



Ballast & sheets - shipping pack



Balance of parts - shipping pack



Layout - string line

mounting of adjustable positioning device



Folded set of positioning devices.



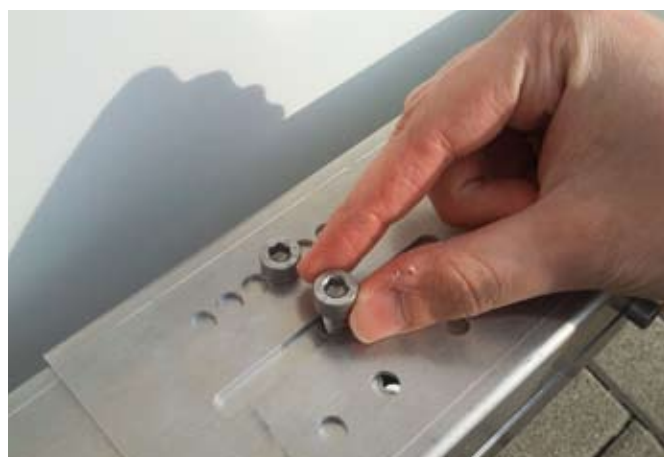
Positioning device 180° opened.



For justification press small catches to both module frames.



Into the hole and the long hole



fix Allen head screws tight.

Rail layout



Rough layout of rails



Rear bracket to the north



Front bracket to the south



Align rails to string line



Fixed width set up with layout bar in the south behind rear bracket



Module installation 1



Place module upright on the rails



directly in front of front bracket



Align approx. .20 in from middle



Apply pressure on layout bar (knee)



Lay module flat



and pull in place

Module installation 2



Lift module to target inclination



Lift rear bracket into position



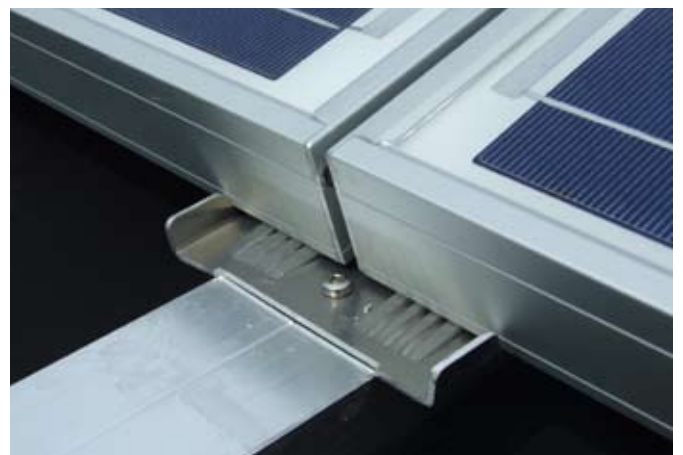
Install next module same as first



Lift next rear bracket into position



e.g.: Module right in first position



e.g.: Module lifted correctly

Easy wiring options



Connect module plugs



Insert cable tie into frame hole



Carefully tighten cable tie



bundle home-runs with cables



Other options for



cable management

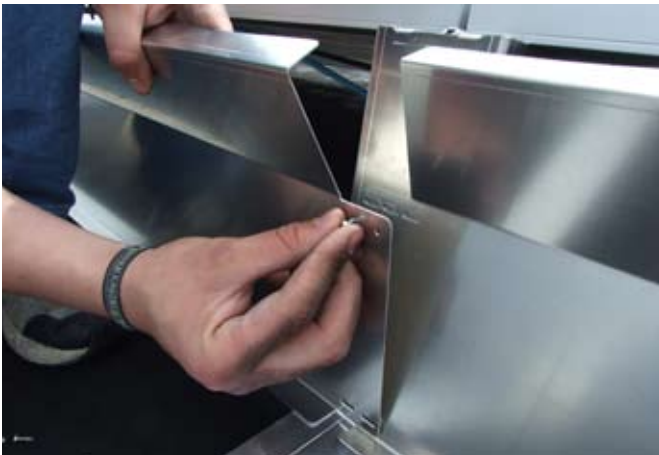
Back sheet installation (5.35 - 5.51 ft.)



Start screw in existing top right hole



based on module width



Overlap next back sheet



Place screw in the slot



Secure sheets into rear bracket



Finally screw sheets at the bottom

Side sheet mounting



Loosen screw at end bracket



Place side sheet with groove on



clamp and lower side sheet



Hook groove into rear bracket



Secure with screw - end bracket



Side sheet installed

Final assembly steps



Insert rail connectors



Place rails to the north



Check bracket layout and align



Bend up securement tabs slightly



Place end caps on rail ends



Place ballast according to plan

*ilzo*easy

Completed system

